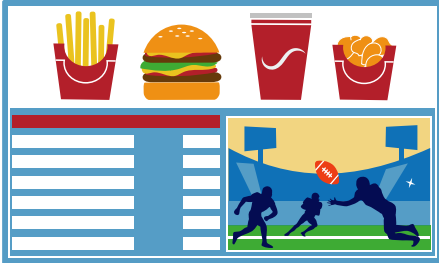


EasyStream by PCI Express is an IPTV gateway for streaming terrestrial (DVBT) or satellite (DVBS) TV channels over an IP network. This allows you to incorporate live TV on to your Signagelive network.



EasyStream servers come complete with Signagelive integration as standard. The integration allows you to synchronise playlists containing all your configured EasyStream channels with your Signagelive network. This means you don't need to create each playlist one by one and can easily schedule your channels, saving time and reducing setup and support time and costs.

It has always been possible to use IPTV on a Signagelive network. However, traditional barriers for IPTV platforms including excessive costs and complex set up made IPTV prohibitive for many companies - EasyStream removes these barriers with a cost-effective solution and simple set up and support.

Whether you want to display live TV for breaking news stories, or large sporting events with brand advertising, EasyStream and Signagelive provide the perfect combination for managing, distributing and displaying live TV content.

## Technical Considerations

EasyStream can broadcast IPTV channels in two different ways – either unicast or multicast. Which you use will depend on the number of channels you're streaming and players on your network.

**Unicast** creates a '1 to 1' connection. Which is ideally suited to networks with 1 or 2 players.

**Multicast** creates a '1 to many' connection. If there are more than 2 players on the network then multicast is required.

You will also need:

- A multicast router (an IGMP querier)
- An IGMP v2 snooper (These are not normally available on a standard router or switch)

PCI Express's preferred option for multicast delivery is to use a managed switch such as those provided by Cisco, and they are able to offer support with network planning and installation of the necessary hardware.

You need to ensure your Signagelive player is compatible with IPTV and the IPTV broadcast method for your requirements, current IPTV protocol support is detailed [here](#).



## Legal Considerations

- You will need a TV License for your premises
- You may need a PRS license if you play music

## How can I order this solution?

Orders can be placed with a PCI Express reseller. For an introduction to one, or a demonstration, please contact PCI Express [here](#).

## Do I need training?

PCI Express can offer online training for the EasyStream server free of charge. This training can be scheduled at the point of purchase or by contacting [PCI Express](#).

"PCI Express has been providing IPTV hardware and supporting services to system integrators and resellers for over 4 years. Through collaboration with our partners and customers, we realised there was a need for an easy to use, cost-effective IPTV gateway, so we created the EasyStream platform. The EasyStream platform was built from the ground up to be an efficient and stable platform for delivering TV channels over an IP network. Our integration with Signagelive brings cost-effective, scalable IPTV to digital signage networks".

*Steven Matthews, PCI Express*

**What are the costs?** Each EasyStream server is custom built to the clients needs, from 2 tuners up to 32 tuners.

EasyStream comes in 2 different server models:

- **EasyStream Moi Pro AMD** – 1U server for installation in server rooms – up to 32 tuners.
- **EasyStream Mini Server** – a compact fanless server for installation in public space – up to 16 tuners

**Example pricing for End Users is provided below (ex VAT) for the most popular combinations. Discounts are available for qualifying Resellers.**

EasyStream Moi Pro AMD	
With 8 x DVBS tuners*	<b>£1,495*</b>
With 8 x DVBT tuners**	<b>£1,595*</b>

EasyStream Mini Server	
With 8 x DVBS tuners*	<b>£1,695*</b>
With 8 x DVBT tuners**	<b>£1,795*</b>

\*DVBS is for the display of Satellite television feeds. \*\*DVBT is for the display of Terrestrial television feeds. 1st year remote support is included in the price. Subsequent years are £180 + VAT for End Users.