

SCALE YOUR QSR WITH DIGITAL SIGNAGE

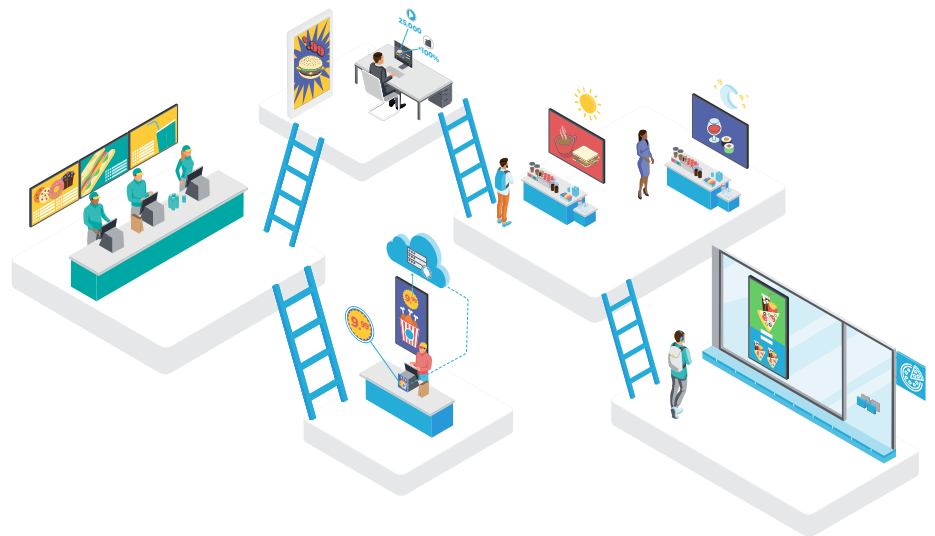
Digital signage for QSRs (Quick Serve Restaurants) allows you to maximise the impact of the content you want to display to your customers. Build scheduled menus, promote limited-time offers and increase your return on investment by moving away from paper print to digital.

UPDATE YOUR MENU IN SECONDS

Choose to upload your own menus or use our Google Sheet integrated Menu that allows you to upload your own design and edit your menu items quickly and easily. Don't have a menu already? Choose from a range of pre-built menu template menu designs from our Marketplace.

THE RIGHT MESSAGE AT THE RIGHT TIME

Use scheduling to arrange the right content to display when your offers are available. No more out-of-date menu items or expired offers. Changing content can be done in seconds and you can schedule for days, weeks or months in advance and make changes at any time.



“Scheduling content right down to the minute is a huge help in keeping our content screens current and relevant in our fast-paced environment. The ability to place our content front-facing to the majority of our customers and have it in high def and reliable, professionally displayed undoubtedly helps expand our reach.”

Pam T



CUSTOMISE YOUR ORDER

If you already have a POS database, we can develop a custom app that connects to your data and pulls your menu items automatically, leaving you free to focus on other priorities, safe in the knowledge that your price is always right.

BUILT FOR SCALE

Signagelive is perfect for those managing multiple locations. Our CMS is 100% Cloud-based which allows you to Schedule content, make alterations and manage your network completely remotely with unlimited users and global scalability.



SECURE
DASHBOARDS



APPROVALS



GRANULAR USER
PERMISSIONS



2 FACTOR
AUTHENTICATION



“ Amped Digital continues to grow our relationship with the Krispy Kreme team, supporting day-to-day operations with new initiatives and store openings, with tremendous support from Signagelive. ”

Amped Digital

“ It is nice to be able to upload anything to the board for my patrons to see. I like that it isn't just for menus, but any information, celebrations, special events, and pictures. ”

Anthony A

TRUSTED WORLDWIDE



SIMPLIFY INSTALLATION AND DEPLOYMENT

DELIVER YOUR MESSAGE TO ANYONE, ANYWHERE, WITH A RANGE OF HARDWARE OPTIONS AT ANY SCALE



CHOOSE FROM A RANGE OF PLAYERS

Signagelive supports a huge amount of players to choose from. This gives you the freedom to use existing hardware or select the hardware of your preference.

Choose from BrightSign, LG, Samsung Tizen, Chrome, Philips, Windows, IAdea, Planar, ViewSonic, Amazon fire TV, or Allsee.

